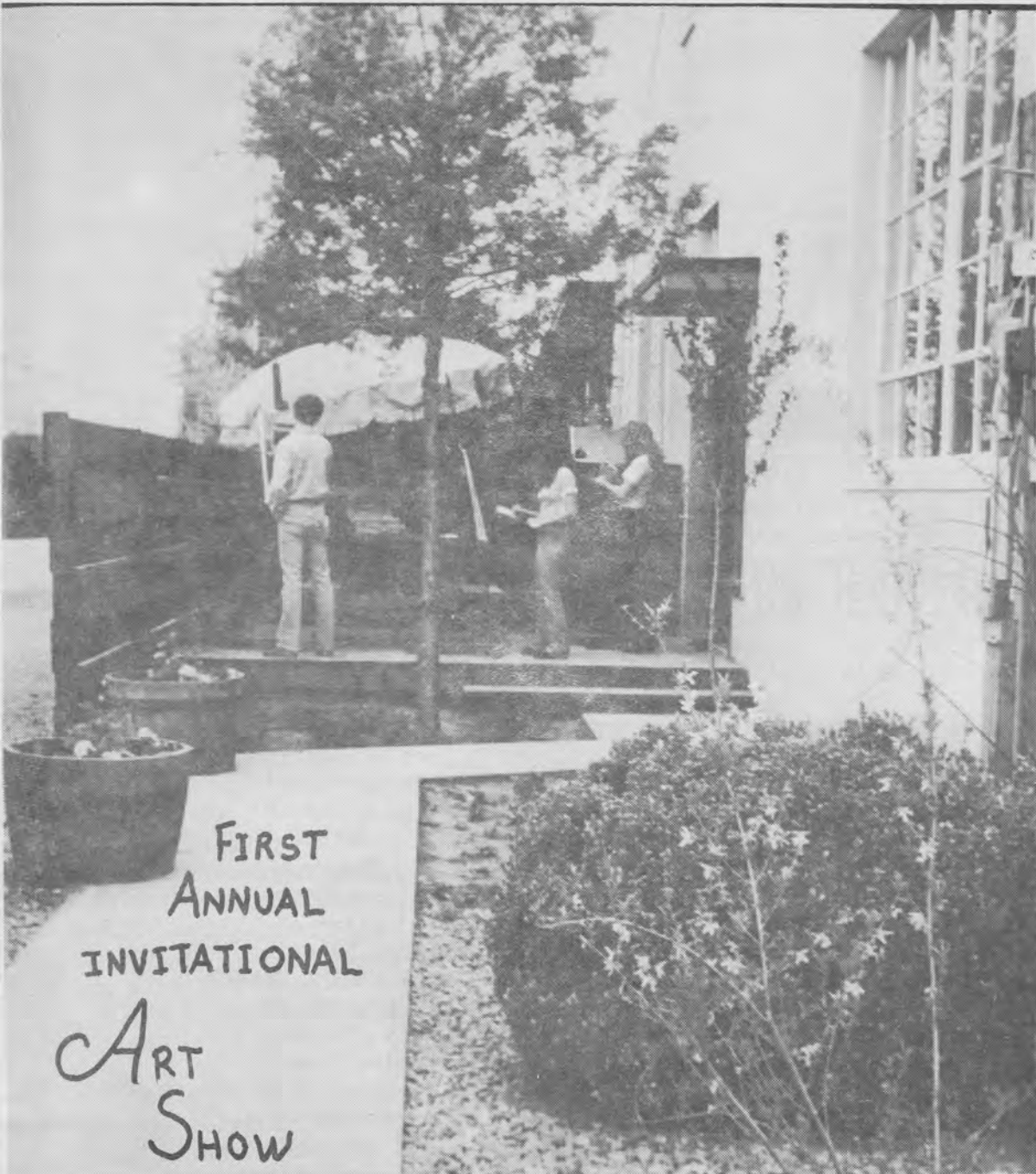


ART REPORT

April 22, 23, 24, 1975 * Oakdale High School





Behind it all...

Talent & Dedication

A "small world" community with enthusiasm for arts and

crafts, the imagination and creativity of Al Jericoff, Art Dept. Chairman, the support of the Oakdale High School Principal, Dr. Robert Scherer, and community organizations, plus the interest of numerous individuals has brought about the development of an art center at Oakdale High School.

The goal of the center is to provide an opportunity for people of the entire area to become involved with art by experiencing a variety of art media, and by viewing contem-

Oakdale hosts first annual Art Show

Feeling the need to bring greater exposure of new movements and trends in student art to the community of Oakdale, Al Jericoff--OHS Art Dept. Chairman--has planned the 1st Annual Invitational Art Show to be presented April 22, 23, and 24.

Leading high school art educators from surrounding counties were invited to send examples of their students' best work in thirteen categories.

Invited to judge the entries is Mrs. Fay Gartin, Fine Art Consultant of the Stanislaus County Schools Department of Education.

The awards will be presented at a reception to be held for the young artists and their guests the evening of April 23rd from 7:30 to 8:30 p.m.

Bus loads of students from the participating schools are expected to attend the three-day show. The festivities will include demonstrations of Bakit, Raku, Candle Sculpture, and Glass Blowing.

Feeder schools in the area have been invited to send groups of 8th graders, who next year will be attending high school, to attend the show.

Counties represented at the art show include Tuolumne, San Joaquin, Merced, and Stanislaus.





**Arts &
crafts
head for
Campus
Boutique**



porary works of art, The art center has provided a fuller, richer life for the citizens of the Oakdale community.

The center has been developed in three stages. The first stage consisted of the development of separate studios for painting, crafts, and pottery, and a student art gallery. The core of the art center, the student gallery, is an area where students' work is framed and mounted in a professional atmosphere.

Current work of noted artists, special traveling exhibits which are available for display, one-man shows by alumni and/or parents of current students, and stud-

ent group shows have been on display in the gallery. These exhibits bring new ideas and new techniques to our community.

Some of the unique features of the facility are a raku kiln for outdoor firing and electric pottery wheels for advanced students. Moreover, in the outdoor sculpture area we have welding equipment and soldering torches for large sculptures. The jewelry program contains a casting centrifuge and an enameling kiln.





Print - Making



Potting

Sculpturing



Painting

The "campus boutique" is a student store totally operated by the commercial art class. Students are learning merchandising, small store management, and how to create their own saleable products.

A new course is being designed in environmental design where students will have an opportunity to design and construct community and campus beautification areas to emphasize the fact that art is "everywhere."

In the future a pug mill for recycling used clay will be added, as well as a media center where individual students will be able to view film strips and movies to research new developments and techniques in the field of art.

The curriculum for the center is organized into three principal categories:

1. Fine Art--including painting, sculpture, print-making, and art history.
2. Applied Art--including crafts, weaving, pottery,



3. Commercial Art--development of skills in silk screen, fashion illustration, interior design, and advertising layout.

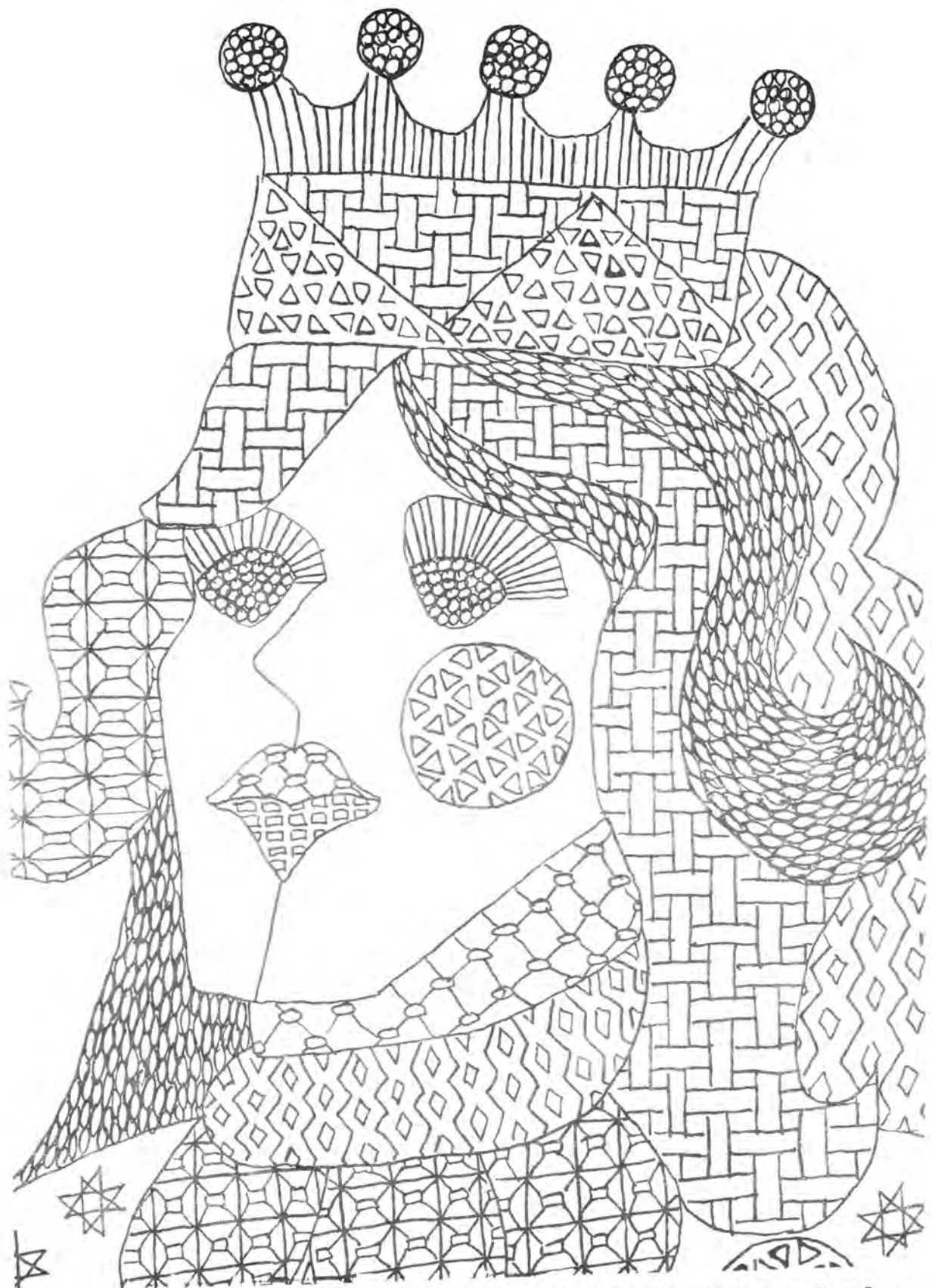
The facilities, used the year around, also include special interest classes, such as window display and in-

terior decoration, adult education evening classes, and summer school sessions.

The art center is also available to organizations for use in cultural meets, fashion show, and concerts.

One community leader, during a tour of the facilities, called it a "beehive of activity."





Texture Drawing by Roy Ann Kaufman